

PLAN NO. ENTERED AND REGISTERED ON INSTRUMENT NO.

A.D. REGISTRAR N.A.L.R.D.

Plan showing Survey of Lot 1, Block 1, Plan 852 0616 for the purpose of Amending Legal Description Due to Change in a Natural Boundary all within the N. 1/2 of Sec. 13, Twp. 53, Rge. 2, W5M. PARKLAND COUNTY

SCALE 1:2000 DECEMBER, 2011 CATHY SPROTT, A.L.S.

LEGEND

- Alberta Survey Control Markers shown thus...
Statutory Iron Posts found (including D.L.S. pattern or brass cap post) are shown thus...
Witness Monuments placed are shown thus...
Bank Tie numbering shown thus...
The geo-referenced point is a found Alberta Survey Control Marker and is shown thus...
This plan is based on: Horizontal Datum - North American Datum 1983(original)
Projection - Universal Transverse Mercator
Reference Meridian - 117°2'Zone 11)
Combined Factor = 0.999920

Statutory Iron Posts placed are marked P120 and are countersunk. Distances shown are in metres and decimal thereof. The area affected by the registration of this plan is denoted thus: Lot 1, Block 1, Plan 852 0616 = 85.86ha. Accreted Land = 0.74ha. Total = 86.62ha.

- oc. acres
ASCM Alberta Survey Control Marker
blk. block
bdy. boundary
B.C. beginning of curve
calc. calculated
ck.m. check measured
chd. chord
cnc. concrete
cop. copied
c.p.s. countersunk
CSRS Canadian spatial reference system
C of T. Certificate of Title
E. east
E.C. end of curve
E.L. established
F.C. fence corner
Fd. found
GNSS global navigation satellite system
ha. hectares
int. intersection
I. statutory iron post
I.bar. iron bar
L.S. legal subdivision
M. meridian
Mp. marker post
Mk. mark
Mkd. marked
N. north
NAD83 north american datum, 1983
P. standard C.L.S. Post (Brass Cap)
PIT. 4 pits
PL. placed
PL. point of intersection
prop. proportion
Rad. radius
Ref. reference
Rge. range
Re-est. re-established
RP. geo-referenced point
R/W. right-of-way
S. south
Temp. temporary
Twp. township
U.T.M. universal transverse mercator
W. west
Wo. wooden post
Wit. witness
Δ. delta

TABLE "A" BANK OF LAKE NO. 3 (LAKE EDEN) AS TRAVERSED BY CATHY SPROTT, A.L.S. OCTOBER 21, 2011. Table with columns: BANK TIE, BEARING, DISTANCE. Rows 1-28.

TABLE "E" BANK OF LAKE NO. 3 (LAKE EDEN) AS TRAVERSED BY CATHY SPROTT, A.L.S. OCTOBER 21, 2011. Table with columns: BANK TIE, BEARING, DISTANCE. Rows 95-129.

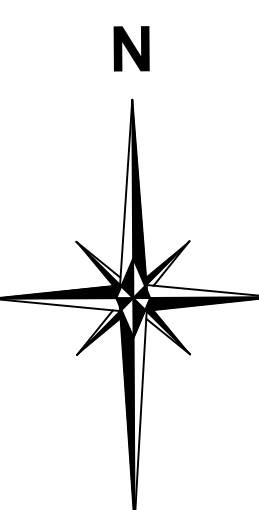
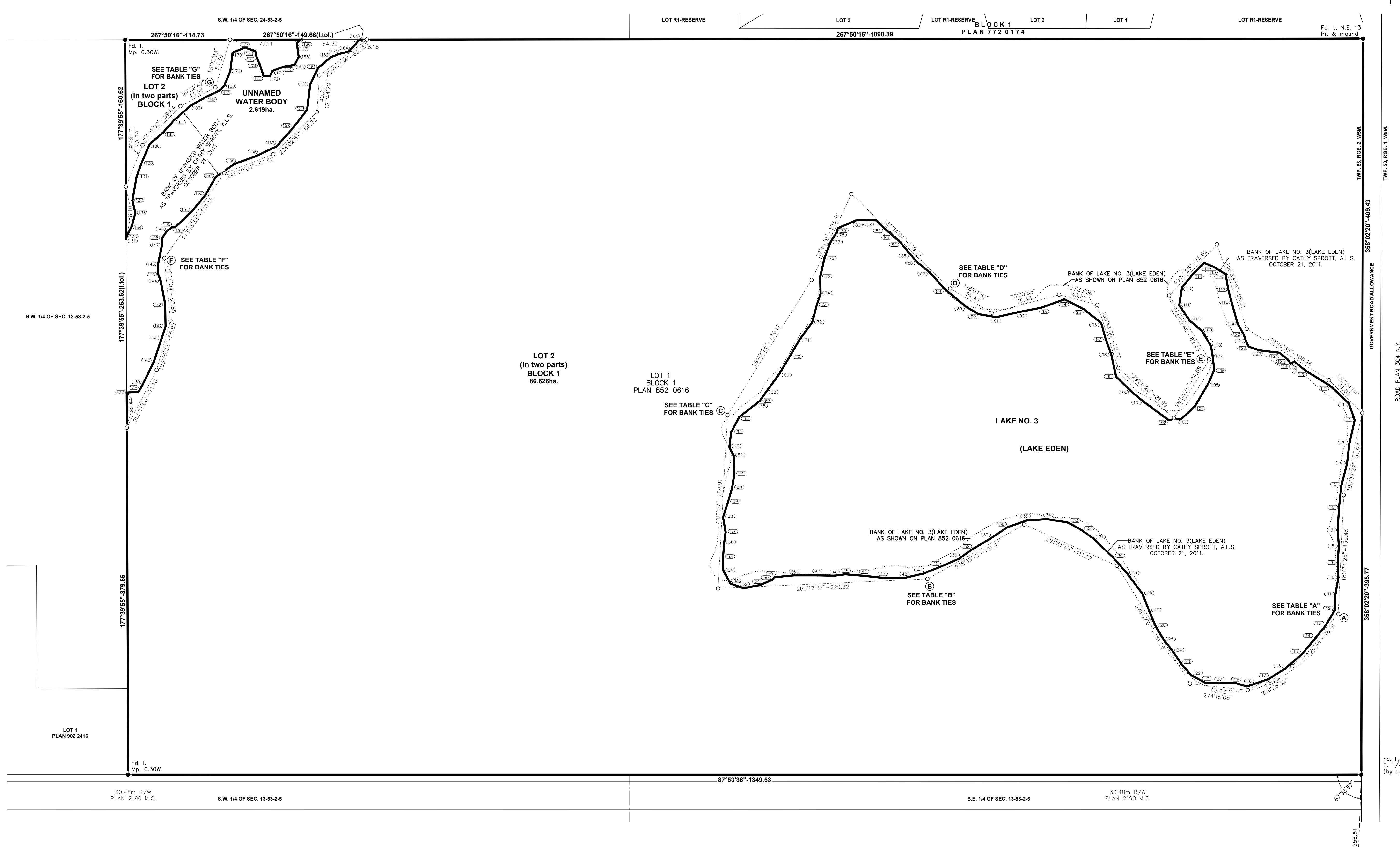
TABLE "B" BANK OF LAKE NO. 3 (LAKE EDEN) AS TRAVERSED BY CATHY SPROTT, A.L.S. OCTOBER 21, 2011. Table with columns: BANK TIE, BEARING, DISTANCE. Rows 29-53.

TABLE "F" BANK OF LAKE NO. 3 (LAKE EDEN) AS TRAVERSED BY CATHY SPROTT, A.L.S. OCTOBER 21, 2011. Table with columns: BANK TIE, BEARING, DISTANCE. Rows 130-154.

TABLE "C" BANK OF LAKE NO. 3 (LAKE EDEN) AS TRAVERSED BY CATHY SPROTT, A.L.S. OCTOBER 21, 2011. Table with columns: BANK TIE, BEARING, DISTANCE. Rows 54-74.

TABLE "G" BANK OF LAKE NO. 3 (LAKE EDEN) AS TRAVERSED BY CATHY SPROTT, A.L.S. OCTOBER 21, 2011. Table with columns: BANK TIE, BEARING, DISTANCE. Rows 155-186.

TABLE "D" BANK OF LAKE NO. 3 (LAKE EDEN) AS TRAVERSED BY CATHY SPROTT, A.L.S. OCTOBER 21, 2011. Table with columns: BANK TIE, BEARING, DISTANCE. Rows 75-94.



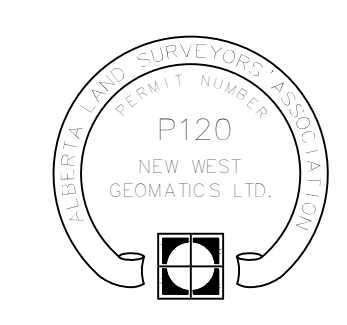
0 50 100 150 200 metres

Fd. l. c.s. 1/4 Sec. 13 (by approach)

SURVEYOR NAME: CATHY SPROTT, A.L.S. SURVEYED BETWEEN THE DATES OF OCTOBER 20TH, 2011 AND DECEMBER 5TH, 2011 IN ACCORDANCE WITH THE PROVISIONS OF THE SURVEYS ACT.

REGISTERED OWNERS 1260582 ALBERTA LTD.

CLIENT: Wes Erickson DATE: December 13, 2011 FILE NO: 2093-001-11 DRAWING NO.: 209300111B.DWG DRAWN BY: PH PAPER SIZE: 24"x45"



NEW WEST GEOMATICS Suite 308, 8013-32nd Street, Lacombe, Alberta T4L 2A6